

Gibson Times

Thanksgiving lunch



Greetings from the Director

In January 2021, I accepted the challenge of becoming the interim director of the Gibson Center with the expectation that I would return to normal life in a few months. Instead, it has been an extraordinary three years of intense activity and stimulation watching this organization grow and push beyond previous boundaries.

With everyone's help and ideas we added the Stay Warm, Safe and Dry home modification program with Adam and Renee. Renee became our Senior Resource Navigator, now getting over 15 calls per week. We began partnering with OLLI to hold multiple classes and offer 20 free memberships, giving access to their full catalogue of programs. We opened the Internet Café and have 9 hours a week of computer training and have given away over 100 chromebooks and iPads. We have more! When I want real joy, I go to the Activity Room to take in the Lisa DuFault photo gallery of philanthropic and hilarious seniors giving their everything to the Valley.

Our Guest Chef lunches and Arts for Lunch performances have been added to our core congregate and home delivered meals programs that have almost returned to pre-Covid levels of participation with a host of new faces. Participation in our classes, trips and excursions is up by more than 10%. We are truly a community hub.

There is so much more ahead. The Gibson is poised to reduce social isolation and loneliness. We can partner with others to reach older adults where they live to further our mission to enable seniors in New Hampshire's Northern Carroll County to live independently and actively, with purpose and dignity. David Smolen has the experience, the heart and the energy to take the Gibson to the next level. I will be continuing to coordinate our MWV Age-Friendly Community actions and revive HomeShare in the Valley.

I am so proud and excited to return to the Board and support this incredible staff and our new Director.

Thanks to one and all.

Highlights

Page 2

Special Events
happening throughout
month of December

Page 3

Virtual Performances
Ongoing Weekly
Programs

Page 4 & 5

Day Trips
MWV-Age Friendly
Overnight Trips

Page 6 & 7

Ongoing Services
Nutrition Tips
2024 Craft Fairs

December Special Events

\$250 gift certificates to Stone Mountain Arts Center will be raffled at the end of the month. Every day you attend lunch during the month of December, your name will be entered to win.

Edible Cookie Painting, Thursday the 7th. This year you can create edible works of art for your family and friends who “have everything” or are in the process of downsizing! We will be painting sugar cookies using edible tempera paint. You can choose from our cookie cutters or bring your own favorites. Sugar cookie dough, edible tempera paints, and new brushes will be supplied. Local artist Elaine Klement will also be on hand to offer suggestions for techniques. The supply cost is \$2 for a dozen cookies. Please sign up in advance so we know how much dough to make. Call Penny [603-356-3231](tel:603-356-3231).



We will play **BINGO** after lunch on **Monday the 11th**. Bring a prize for the table.

Christmas Dinners: served at our usual lunch time on Wednesday the 13th & Thursday the 14th. The special meal is Durgin Park Roast Beef and all the fixings sponsored this year by **White Mountain Oil & Propane**. Invite your family and friends to these special meals.



American Legion Fish Fry: Friday the 15th 4:00-7:00 Post #46 is donating \$2 of every plate to the Gibson Center. Come with all your friends for the best fresh haddock, fries, and slaw.

Santa Gift Exchange: Monday the 18th. Bring a gift, marked for a man, woman, or either. Items like a box of cookies or a book of stamps are useful/welcome gifts for all. People may pose for a photo with Santa.

Baked Item auction: Wednesday the 20th. We are looking for people to bake items to donate to our auction. Pies, cakes, cookies are all welcome. Jams and jellies make wonderful gifts! We will hold the auction between lunch and dessert. Please sign up for what you plan to donate.



The **Winter Solstice**, Friday the 22nd, is the date of the longest night of the year. We will host a pizza party around the fireplace where we will create luminaries for our walk way and share memories of holidays through poems, songs, and chatting. For those who want a ride from home, this will be a local See the Lights ride as well. Call Penny to sign up. Please sign up for the pizza too, so we know how much to make.

Gibson Center will be closed Monday December 25th and January 1st.

We will do our after lunch **Word Search** on **Tuesday the 26th**.

Virtual Magic of Christmas, after lunch on **Thursday the 28th**.

Save these dates:

OLLI/Hospital Lunch N Learn, Monday January 8th. Learn about the fun ways to remain social, and vibrant, both indoors and out.

January 23rd: Art for Lunch Cameron Sutphin; as an acoustic solo act, Cameron performs original music, as well as Country and Folk covers.

John Williams Scores! This winter (First & Third Thursdays after lunch)we will be showing six movies for which John Williams composed the scores. We will culminate with the trip to the Portland POP's John Williams concert on April 7th. The movies are free, the concert tickets are going fast so sign up for the tickets.

Virtual Performances being shown at Gibson Center

Magic of Christmas: December 28th and January 2nd.

Winter Movie Series: John Williams Scores. On first and third Thursdays, after lunch, we will show six of the movies for which John Williams composed the music. There will be a short introduction to some of the movies, where John used specific themes for certain characters, and general discussion about how the music adds to the mood of the movie. Following the series, participants have the option of traveling to the Portland POP's concert featuring the music of John Williams. (the concert is not virtual, and individual concert tickets are \$60).

The Gibson Center is offering these showings of a variety of concerts in our seven speaker activity room with a large screen for projection. These are live performances of the Portland Symphony. Programs must be ordered in advance, so please sign up at least one week before the event.



Fun Programs, Classes, Trips, and Adventures

The Gibson Center has developed a huge menu of programs for seniors of all abilities and interest levels. Much of what we do has come directly from your suggestions, so keep them coming!



Ongoing Weekly Programs

Monday	Chair Exercise FunDay Tai Ji Quan, Moving for Better Balance General 1:1 Computer Tutoring Medicare: Open Enrollment 10/15-12/1	10:30 AM 12:30 PM 4:00 PM By Appointment By Appointment
Tuesday	Strength, Balance & Stretch Joan Lanoie, Advanced Directive, 2nd week	10:00 AM By Appointment
Wednesday	Quilt 2nd & 4th weeks Gameday General 1:1 Computer Tutoring	10:00 AM 12:30 PM By Appointment
Thursday	State of NH Veterans Service, 1st & 3rd week Call for your appointment 603-624-9230 X 301 Strength, Balance & Stretch Afternoon rides, scenic, historical, social Tai Ji Quan, Moving for Better Balance	By Appointment 10:00 AM 12:30 PM 4:00 PM
Friday	Computer Classes with Andrea Libby. Call Penny 603-356-3231 Chair Exercise Class Friday Painters, bring your own supplies	By Appointment 10:30 AM 12:30 PM

Gibson Center

Upcoming Day Trips

*For all bus trips, please sign up, and pay in advance. Call **603-356-3231**. Federal health precautions are followed on the bus. For Door to Door Transportation trips, you will be called with your individual pick up time, the day before the trip. Many venues will only hold tickets for so long. Please indicate your interest, so we can reserve tickets.*

All trips this season have reduced rates due to the generosity of program sponsors.

Monthly trip to the **Humane Society, to socialize Cats**, first Wednesday each month, after lunch.

We will visit the **Brownfield Market** on Tuesday, December 19th. They have amazing produce! Bring your own bags.

Festival of Trees: Friday, December 1st, after the Annual Meeting. Call to sign up for this trip. Starts at Gibson. Home drop offs are available after. Bus donation is requested, and you pay your own entrance fee at the door. .

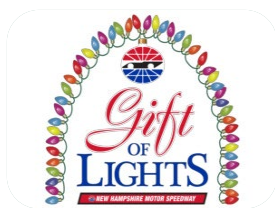
The Mount Washington Valley Band Christmas Concert: Sunday the 3rd. Home pickups are available, Donations are requested for the bus and the concert. **Sign ups are needed by 12/1.**

Magic of Christmas 12/8 Full

The **KHS Variety Show**, on Saturday, the 9th. Join the Dance Team & Choir to welcome in the Christmas season. Door to door home pickups are available for this evening program. Donations are requested for the bus, pay your own entrance at the door.

Raptor Program after lunch at the Conway Library. We will leave from Gibson Center and offer home drop offs afterwards. December 15th.

The Longest Night, Local Light Ride, and Luminaries. Friday the 22nd is the winter solstice. There will be home pickups and the traveling will allow us to see the local holiday decorations. We will then gather by the Gibson Center fireplace for a pizza and sharing. We will have Luminary Bags that you can decorate in honor of or in memory of a friend or loved one. This is also the Longest Night when we think of caregivers who have long hours of devotion and caring. We will share poetry and sing traditional carols. Afterwards, those who ride the bus will see the decorated Village. If space allows, we can add people who attend who want to join the lights ride but you must sign up.



The Gift of Lights & Full Moon Ride: Wednesday the 27th we will travel to the NH Speedway where we will be awed by an amazing 3 mile long light display. Afterwards, we will stop for dinner at the 104 Diner. Dinner is on your own. The ride and light show are \$15.

Snow Sculpture January 29th. We will travel to Great Glen to walk around the snow sculptures. We will stop on the way home for cocoa. Bus by donation, snack on your own.

Johnny Cash: The Official Concert Experience: 3/8/24 \$85. We have enough registrants to obtain the group rate and we are down to the last 2 seats on the bus. Sign up now!

John Williams POP's Concert: 4/7/24 \$60. We've been given another month to generate interest. Please sign up today. This program meshes with the Winter Movie Series.



POP's Concert

MWV Age-Friendly Community

Four years in from the launch of our 12 town MWV Age-Friendly Community, we are proud of the numerous accomplishments, grants and awards we have received. We are bringing the lens of Healthy Aging to the realms of Transportation, Health, Housing, Outdoor Spaces and Community Connections by knitting together towns' and non-profits' efforts. Under the umbrella of the Gibson Center, we have representatives who are constantly looking for ways to learn, replicate and multiply our strengths.

Notable accomplishments include identification of our 53 Most Walkable Trails, receipt of an AARP Challenge Grant to build the pavilion at Ossipee's Constitution Park, creating the very current MWV Senior Resource Guide that is distributed in our libraires, town halls, pertinent organizations, and on our website. We work with our Carroll County Mobility Manager, Scott Boisvert, to support the free vehicle inspection and repair program and the Carroll County Recycled bike coop to strengthening our transportation coverage. We have worked to build a more dementia friendly community. Soon we will revitalize HomeShare as a viable alternative for affordable housing. There are endless possibilities.

This will become my new focus after stepping down as Director of the Gibson Center. I am deeply grateful to the Board for providing the support to grow this Community. Each month you will learn more but don't wait – you can visit our website any time at <https://www.gibsoncenter.org/mwv-age-friendly-community/>



Gibson Globetrotters Overnight Trips

Please sign up for all programs: **603-356-3231**. Collette has a fantastic insurance policy, one can cancel up to 24 hours before the trip

2024 Trips with Collette Tours



Spotlight on South Dakota: September 13-19, 2024. Six nights in Rapid City with day tours to Mt. Rushmore, Crazy Horse, Bad Lands, Devils Tower, Wall, Deadwood, as well as a lot of wild life along the way. [Link to the Flyer](#)

2024 Trips with Diamond Bus Tours

Ottawa Tulip Festival, Montreal, Quebec: May 19-24, 2024. \$1165 ppdo. Visit the highlights of each city, including a cruise on the Saint Lawrence, and the Tulip Festival. 2 hotels, 10 meals. Passport needed. We are now collecting deposits for the trip. [Link to the flyer](#)



The Ark Encounter & Creation Museum: October 20-26, 2024. \$965ppdo. Spend a day touring the life size recreation of Noah's Ark, built to the specifications in the Bible! Also visit the Creation Museum, and the Cincinnati Museum in Ohio. [Link to the flyer](#)

Ongoing Services From the Gibson Center

- **Senior Resource Navigator – Renee Wheaton** helps with troubles like how to apply for government assistance, renew a driver's license, access care or arrange for home services, find durable medical equipment, or the like. Reach her directly at **603-205-0909** or by calling the Gibson Center
- **Personalized Medicare Counseling – Ele Border** is a Certified SHIP (State Health Insurance Assistance Program) counselor who explains in an unbiased, unaffiliated and pleasantly educational manner the differences between Original Medicare and Advantage Plans, financial assistance programs, late enrollment penalties, and deferring enrollment. Also, Ele provides Open Enrollment assistance from October 15th through December 7th when Medicare beneficiaries have the opportunity to change Prescription Drug Coverage (part D plans). Please call **603-356-3231** to schedule your personal appointment with Ele.
- **Computer Tablet and Chromebook access** – We can offer free Tablets and Chromebooks thanks to generous grants from Spectrum, Charter Communications Digital Education Grant – while supplies last.
- **Computer Training – Andrea Libby of Libby Computer:** Fridays 9:00 AM - 12:00 PM and our volunteer experts Mondays and Wednesdays 9:00 AM - 12:00 PM - all offer 1-1 training for beginners or more advanced users. Skills training can include setting up email, Zoom, searches, learning how to access medical practice portals for appointments, labs and questions, how to make and participate in Telehealth appointments, online job applications, how to prevent scams and fraud, and smartphones, cameras, photos and games. Call **603-356-3231** to sign up for tutoring.
- **Advanced Care Planning – Joan Lanoie.** Understand and get help with writing down your options for end-of-life care and making your wishes known. Joan Lanoie can help explain the nuances and implications while also providing helpful advice for family members. Appointment made by calling **603-356-3231**.
- **Veterans' Administration Benefits Counseling** – Counselors come the 1st and 3rd Thursday of each month from 9AM to 3PM by appointment to provide consultation regarding Veteran's Benefits. Call **603-624-9230, ext. 301**, or email **Jay.Davis@va.gov** to request an appointment directly.
- **Finding Reliable Health Information – Dr. Charles Felton** is a retired pulmonologist who can help you find reliable healthcare websites and research. He can help interpret medical information and misinformation. He will not be acting as a medical provider but be your advocate and guide. Fridays 1:00-3:00 by appointment by **603-356-3231**
- **Stay Warm, Safe and Dry - Home Modification:** Valley homeowners who need a reliable, licensed contractor to help with small modification projects to improve the safety, warmth or tightness of their homes can call Renee Wheaton, who will coordinate with our contractor, Adam Balodis. Sample projects include replacing or repairing porch steps or railings, installing grab bars, improving lighting, changing out air filters, installing smoke or CO alarms, installing ramps, or other repairs that increase health and safety. This is not an emergency service but one that will be available by request and subject to scheduling Renee can be reached by calling the Gibson Center at **603-356-3231** or email Renee Wheaton at **staywarm@gibsoncenter.org**



Seasonings from Becky in Nutrition

Hello from the Nutrition office! These next few months are my favorite time of year—the allure of rich food and sugary sweets is difficult to resist. But for older adults, indulging in moderation may be imperative. When keeping your plate healthy seems overwhelming, I've got you covered with a short breakdown of the biggest obstacles to healthy eating during the holidays and the best ways to have your cookies and eat your veggies, too.

OBSTACLES TO HEALTHY HOLIDAY EATING

- **SOCIAL PRESSURE:** Even the strongest of wills can crumble when offered a homemade cookie or three from your adorable grandchildren or great-grandchildren. Add the warm and cozy conversation accompanied by equally cozy drinks and dishes and suddenly you're way over your sodium or sugar limit for the day and it's barely three o'clock in the afternoon.
- **ABUNDANCE OF GOODIES:** Almost everywhere you turn during the holidays, you'll find something sweet or rich and savory to try. From bacon-wrapped everything to chocolate-covered treats, the holidays are notorious for hosting an abundance of unhealthy food choices.

TOP 3 TIPS FOR HEALTHY HOLIDAY EATING: If you find the holiday season hard to handle when it comes to sticking to healthy eating, here are our top tips to keep you and your well-being on track.

- **INDULGE IN MODERATION:** Restricting yourself from enjoying the goodies entirely can be what takes you off the rails. Have a few of your favorite treats and savor them, sticking to healthier choices the rest of the season. Add to the choices, whole wheat crackers, apples or bananas or celery sticks.
- **BE PRESENT:** When you are snacking on the season's best eats, take the time to be present in that moment, with that meal. Focus on your hunger cues and know when to stop to avoid overdoing it.
- **ASK FOR ALTERNATIVES:** If you can't find great balance outside of the holiday gatherings, sometimes asking for alternatives is the best thing you can do. Asking for more vegetable-focused side dishes or starting the evening with a salad rich in leafy greens is a great way to keep your health in mind without giving up the love and celebration that the holidays bring.

Bon Appetite! –Becky



2024 Gibson Center Craft and Artisan Festivals

Holiday Weekends are special at the Gibson Center because we have **New England Crafters at their best!** They offer fine jewelry, photography, art, pottery, stained glass, floral arrangements, candles, Skinny Towels, handmade bags, Kettle Corn, Maple Syrup products, items for your pets, soap, clothing, quilts, pillows, woodcrafts, wood signs and furniture. The Craft Fair benefits the Gibson Center for Senior Services, Meals on Wheels Program. Crafters, find the application at <https://www.gibsoncenter.org/craft-fair-rules-application/>

- **Memorial Day Weekend:** May 25th & 26th Sat & Sun
- **Independence Day Weekend:** July 6th & 7th Sat & Sun
- **Labor Day Weekend:** August 31st & September 1st Sat & Sun
- **Columbus Day Weekend:** October 12th & 13th Sat & Sun

Fair Hours: Saturday, 10AM-5PM; Sunday, 9AM-4PM



A Reminder - Mountain Top Music provides Discount to Gibson Patrons



Mountain Top Music is generously offering a **15%** discount for Gibson Center patrons on tickets to their produced performances in the Majestic Theater in Conway Village. To take advantage of this discount, mention Gibson Center at the door when purchasing tickets in person or call the theater at **603-447-4737** and talk to Kate when purchasing advance tickets. This applies to all Gibson Center patrons, staff and volunteers.

Also of great interest are the First Friday performances every month at 1 PM. The next performance is Mountain Top's Early Music Ensemble presenting an hour of Christmas and other music from eras past. You'll hear Handel and more, played on recorder, cello, harpsichord and flute. Friday, December 1st. All first Friday concerts (first Friday of every month) are by donation – pay what you can.

Details at conwaymajestic.com/concerts. When possible, Jill will be providing bus transportation to these Friday afternoon concerts – check our calendar.

Memory Tree

This holiday season, remember someone special. Keep their memory bright by purchasing a \$50 perpetual red bulb that will light for a lifetime, or a seasonal white bulb for \$10 to shine on the Gibson Center Memory Tree **December 1, 2023-January 15, 2024**. Please call 603-356-3231 to make arrangements.



Photo from Halloween

Quote of the Month

Not only did I get to drive a Meals on Wheels route, I got to take along a friend who absorbed the process from kitchen and coolers to backroads and doorbells. Halfway through, having read the labels detailing allergies, preferences and directions, she exclaimed "I had no idea what a precise and giving program this is. What an operation. I had to see it." INDEED!



2023 Medicare Part D - Open Enrollment (December)

Open Enrollment for Medicare Part D began on October 15th and closes on December 7th. Medicare Part D is a prescription drug plan for people 65 and older. We are very grateful to certified volunteer counselor, Ele Border for donating her expertise and considerable time to providing detailed counseling. Unfortunately, her appointment calendar is over-subscribed now so she is unable to take any more appointments. You can still compare plans and make selections yourself by going to the [Medicare.gov](https://www.Medicare.gov) website if you have a computer or internet capable device. If you need computer assistance, please consider making an appointment with our volunteer computer counselors.



Our Business Supporters



Locally Owned / Caring Pharmacist
3631 White Mt Highway, North Conway
603-730-5432



Nancy M. Cavalieri, CFE

Landline (603) 323-7557
Cellphone (603) 986-3836
nancymcavalieri.cfe@gmail.com

Elder and Probate Accounting

Organize financial documents
Pay bills, make deposits, reconcile accounts,
Sort records for year-end tax preparation
Verify medical insurance documents and claims
Help with paperwork for agencies, associations,
medical or benefit groups

Certified Fraud Examiner

Fraud Detection, prevention, investigation and
Litigation support



L. A. DREW, INC.
GENERAL CONTRACTOR

Is the premiere commercial & custom home builder in Mount Washington Valley. Excavation, pre engineered structures, road clearing & more!

We work hand in hand with you to bring your vision to life



BUILT BEST.... BY DESIGN

Design/Build consultations in house.
Free estimates on your design plans.
(603) 356-6351

Stone Mountain Arts Center: Free tickets

Generously donated by the Working Theory Foundation, we have 2 more \$250 gift certificates to Stone Mountain Arts Center to give away in a free raffle during December!



Come enjoy lunch at the Gibson Center weekdays, serving from 11:30 to 12:15 in the lovely Sprague dining room.

Each day you eat with us, another free ticket is placed in the jar for drawing on Friday the 29th. There is no charge. The more often you come to eat, the more ticket chances you have. Bring friends who might win and take YOU to the Stone Mountain Arts Center for the performance of your choice.

Our Business Supporters

The right
bank makes
a real
difference

Click: northwaybank.com

Call: **800-442-6666**

Northway
BANK

Member FDIC

Silver Lake Landing Apartments



© Tim Shellmer 2004

Located on the shore of Silver Lake in Madison, NH.
Vacancies occur occasionally, call Ken to inquire or to be put on the waiting list

Contact Ken: 603-356-3231, Ext 112

BEASLEY & FERBER *The Elder and Disability Law Firm*

Estate Planning and Elder Law Wills,
Trusts and Probate Avoidance
Estate Administration & Guardianships
Saving Assets from Nursing Home Stays



**CALL FOR A SCHEDULE OF FUTURE
ESTATE PLANNING SEMINARS AT THE
GIBSON CENTER**

Please call for information about future
presentations
1-800-370-5010

Care Givers

There are now two options for caregivers, REACH, and 1:1 Peer Support. Call Jill if you are interested in either.

REACH: stands for Resources for Enhancing Alzheimer's Caregiver Health in the Community. Caregivers will meet with trained coaches & learn to solve common caregiver challenges. Meeting options are currently in-person one-to one coaching or via phone or ZOOM. REACH is funded in part thru Administration on Community Living grant #90ADPI0060

Caregiver Peer Support: There are caregivers who have probably experienced your challenges & can offer a non-judgmental ear. Currently caregivers prefer phone calls so they can keep their loved ones safe.



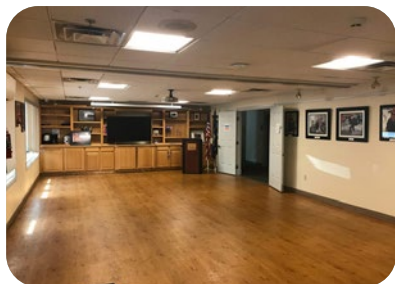
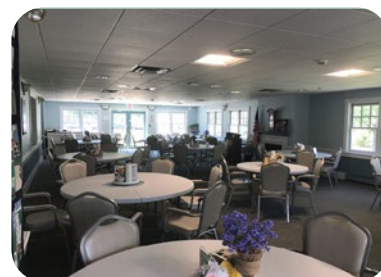
Photo from
Red Parka Pub Bingo

Reserve the Sprague Dining Room for your meetings – Online

The beautiful Sprague Dining room and the Glenna Mori Activity room can be reserved for members of the Valley to use for meetings and activities. Reservations for the Dining room can be easily made for available times by going to our website,

<https://www.gibsoncenter.org/product/sprague-dining-room/>

SPRAGUE DINING ROOM: The 65-seat dining room (without kitchen) is available from 8:00-10:00 am weekday mornings and again from 1:00-4:00 in the afternoon and some evenings or weekends by special arrangement. Our calendar of available times and room policies are posted on the website under Book a Room. There is a nominal fee of \$35 for the Dining room that may be waived for non-profits. We hope you will come enjoy the central Valley location, parking, and congenial facilities for your organization meetings, presentations, family gatherings or club events.



GLENNA MORI ROOM: The Activity Room is a 70-person seating capacity program room with projector and 7 high-quality stereo surround-sound speakers or can be used by up to 20 people for exercise and dance. Our fee is \$25 and may be waived for non-profits. The Activity Room can be requested by completing an inquiry form with a response time of 3 business days as we check for availability of this much used space. Online go to <https://www.gibsoncenter.org/glenna-mori-activity-room/>

TIM DI PIETRO



- Residential Electrician
- Electrical Repairs
- Electrical Upgrades
- Commercial Electrician

NO JOB TOO SMALL

603-356-2248

Our Business Supporters



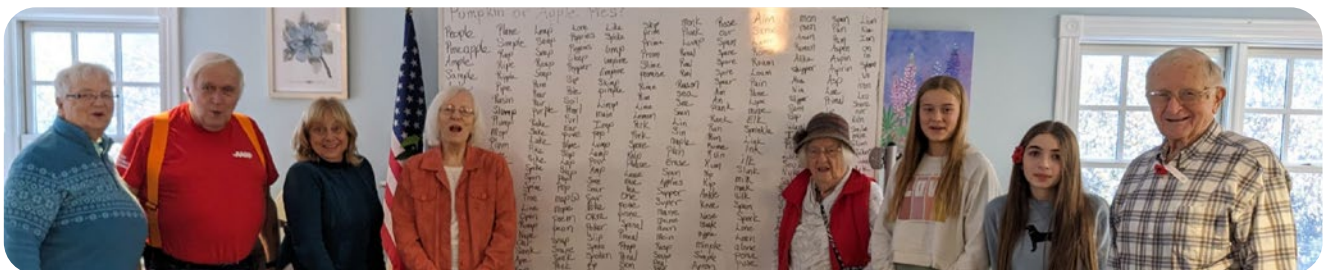
2448 Main Street
North Conway, NH 03860
603.356.5819

info@northcountryfairjewelers.com

Photos from recent Trips and Events

Trips: Humane Society; Red Parka Pub -BINGO

Events: Halloween; Veteran's Day; Middle School game; Thanksgiving



Kudos - Donations

The many people who have called us and offered help! This is such a wonderful community!

Thanksgiving Lunches: Bergeron Technical Service: Shawn, Linda, and Kate; Alvin Coleman & Sons.

Kennett Middle School Students: visit and game

Red Parka Pub: BINGO

George Cleveland: BINGO Caller extraordinaire.

Russ Hunter donated Apple Crisp "It's what Dottie would have done."

Boston Brothers Pizza

White Mountain Puzzle

Altrusa: 2nd Tuesday volunteers

Conway Area Humane Society

The Gibson Center Trip Angels

Majestic Theater

M&D Theater

Little Angel Service Dogs

Book Club: Pamela Memmolo, Conway Public Library,
The Dining Room volunteers, for making us feel special

Vaughn Community Services Food Pantry & Jennifer

Shaws, Wanda Wirling

NH Food Bank

Catholic Charities of NH

Wal-Mart; Phil Spinney

Old Village Bakery

Local Radio Stations:

Easy 95.3 WBNC, 93.5 WMWV, 104.5 WVMJ - Magic.



George Cleveland



Russ Hunter



Apple Crisp



Halloween Decorations by K Kids

Our Business Supporters Newsletter Listings

Beasley & Ferber, P.A. (1-800-370-5010) David Ferber, estate planning including avoiding probate, protecting assets from nursing homes, avoiding state taxes, and elder law.

Chalmers Insurance (356-6926) Steve Cote, full line of personal and business insurance, including Long term care, life and annuities.

Coleman Alvin J. & Son (447-5936) 9 NH Route 113, Conway. General Contractor

First Allied Securities (356-9371) 3277 White Mt. Hwy. Investments including Stocks, Bonds, Annuities, Retirement, College Planning

Gamwell, Caputo & Co., PLLC (447-3356 or fax 447-6563) Dave Caputo, certified public accountants providing tax, accounting, and financial statement services for businesses, individuals, trusts and estates.

H.R. Hoyt Construction Inc. (447-2612) Conway, NH. Poured Concrete

LA. Drew Inc (356-6351) has been a leading contractor in the Mount Washington Valley since 1969. Working with homeowners and architects, we can help you build your dream home from the ground up.

Maureen Cason Hanlon, LICSW (730-5722) 13 NH Route 16A, Intervale, NH: Counseling services for adults and elders.

Memorial Hospital (356-5461) The community hospital of Mt. Washington Valley. Your partner in good health.

North Country Fair Jewelers (356-5819) Brian Smith, Main St, N Conway. Diamonds, gold and silver jewelry, coins, pearls, watches, clocks and antiques. Repairs, appraisals, buy, sell and trade.

NorthEast Auto Body (356-5808) David Smith, 530 Eastman Road, North Conway, N.H.

Northeast Delta Dental delivers quality dental insurance products and services to individuals and families, and groups of all sizes. We work hard to make dental care more affordable and available to the public.

Notchland Inn (374-6131) Harts Location, NH Romantic dining and lodging.

Settlers Green Outlet Village (356-7031) over 60 stores. Every Tuesday is Senior discount day at participating stores.

Varsity Beverage Conway (447-5445) Distributor of Pepsi Cola, Schweppes, Dole Juices, Lipton Tea, Gatorade, Aquafina Water, Mountain Dew, Mug Root Beer, Frappuccino, and Hawaiian Punch.

White Mountain Oil and Propane (356-6386) The Saunders Family, oil and propane, major appliances.

Yankee Smokehouse Restaurant (539-7427) Joseph Ferriera, Jct. Route 16 & 25 in West Ossipee. Real open pit barbecue.

Donate to The Gibson Center

Ways to Give

1. Make it VIBRANT: One time or monthly recurring donation
2. Make it ABUNDANT: Honor or memorial gift, abundance guild
3. Make it LAST: Legacy honor society member, planned giving, charitable bequests, IRA charitable rollover, give appreciated stock, name a charity as the beneficiary of your retirement account

Donation Link

<https://www.gibsoncenter.org/donations-ways-to-give/>

Gibson Center is a 501(c) (3) and donations are tax deductible & our EIN is 02-0351152.

