

# Gibson Times



**Proudly Serving  
Senior Citizens Since 1979**

Thanksgiving Lunch



## Director Message

As we are entering the holiday season and looking forward to the new year, I am feeling grateful for many reasons. One of the blessings in my life is the Gibson Center. Working here brings me joy, a sense of purpose, and empathy for those who are experiencing the challenges of aging.

Now approaching our 46th year of service, I am inspired by the work of those who came before us. It is their work and service that allow us to do what we do the way we do it. I am thankful to people such as Glena Mori, Paul Lodi, Rick Spencer, Fran Lampidis, George Cleveland, and Karen James, who gave so much to the organization.

Now that the baton has been passed to me as Executive Director, I hope that I am a worthy successor to those now departed who contributed their "blood, sweat and tears" to the success of the organization.

One thing I am looking forward to in 2025 is celebrating our 2 millionth meal served, which will likely happen in early summer. Be on the lookout for more information on this in the months to come.



## Highlights

Page 2

**Special Events**  
happening throughout  
month of December

Page 3

**Emergency Backpack Raffle**  
Ongoing Weekly  
Programs

Page 4 & 5

**Day Trips**  
Claiming Our Vitality  
Overnight Trips

Page 6 & 7

**Ongoing Services**  
Nutrition Tips

# December Special Events

**December Movie Series:** Christmas movies we loved! On the 3rd, A Christmas Carol 1951 version with Alister Sims. On the 5th, The Christmas Story (remembering childhood in the 1950's). On the 19th, Charlie Brown Christmas. On the 26th, The Bishops Wife, starring Cary Grant, David Niven, and Loretta Young.

**Gibson Center Tree:** We are starting a new tradition this year. You are each invited to bring an ornament that you will hang on our Christmas Tree in the Dining Room. We will set up the tree for Saint Nicholas day, December 6th. Don't bring an ornament you want back, these will become part of the Gibson Tree.

**Nancy Ann Storybook Doll Program** after lunch, Tuesday the 10th. These cute dolls were on every girls Christmas wish list. Come to learn their history, and see the dolls, in photos and live.

**DellaValla Trio** perform at lunch on Wednesday the 11th, invite your family and friends to join you for this event with seasonal music.

**Lunch Sponsorship:** Thursday, the 12th, Terry O'Brien of the Red Parka Pub is sponsoring everyone's lunch, in memory of her mother, and our friend, **Jean Melczarek**. Thank you Terry, (and Jean for starting this attitude of giving).

**Arts & Crafts with Elaine**, is Thursday the 12th. We will decorate canvas bags, making items for gifts. Please sign up by Monday the 9th, so Elaine has enough supplies. \$5 donation for supplies.



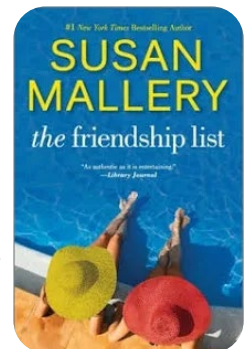
Jean Melczarek



Santa Gift Exchange

The **Santa Gift Exchange** will be Monday the 16th. People who want to participate bring a wrapped gift. The gifts are put in one of three "Santa Sacks", one with gifts for men, one with gifts for ladies, and one with something for anyone. Now days, when many people are downsizing, some prefer consumables, stamps, or candy. People will have a chance to have their photo taken with Santa, so wear your festive sweaters!

The **Gibson Center Book Club**, Tuesday the 17th: **The Friendship List** by Susan Mallory.



**Christmas Lunches**, Wednesday the 18th, and Thursday the 19th. Invite your family and friends to share a delicious Roast Beef dinner, sponsored by **White Mountain Oil and Propane**. **The Jackson School Children will carol at lunch on the 19th!**

**Gibson Center closed for Christmas day, Wednesday the 25th.**

**There will be a special lunch for New Year's Eve.**

**We will be closed for New Year's Day, January 1st, 2025.**



Photo from Halloween Party.



# Emergency Backpack Raffle

Stop by the Thrift Store as we raffle off a few of our Emergency Backpacks, sponsored by the North Conway Rotary. Like the rest of the country, our area has experienced an increase in frequency and severity of environmental disasters including ice storms, severe flooding, and blizzards causing washouts, blackouts and the need for emergency evacuations.

These backpacks contain a number of interesting items to help you through a disaster. Items include a weather radio, multitool, flashlight, first aid kit, and the backpack itself.

**Tickets are \$10 for 13, \$5 for 6, and \$1 for 1. The drawing will take place December 20th.**



## Fun Programs, Classes, Trips, and Adventures

The Gibson Center has developed a huge menu of programs for seniors of all abilities and interest levels. Much of what we do has come directly from your suggestions, so keep them coming!



## Ongoing Weekly Programs

<b>Monday</b>	Chair Exercise FunDay Tai Ji Quan, Moving for Better Balance New to Medicare; call for an appointment General 1:1 Computer Tutoring	10:30 AM 12:30 PM 4:00 PM By Appointment By Appointment
<b>Tuesday</b>	Strength, Balance & Stretch Joan Lanoie, Advanced Directive, 2nd Tuesday	10: 00 AM By Appointment
<b>Wednesday</b>	Quilt 2nd & 4th weeks Gameday Ballroom Dance Class	10: 00 AM 12:30 PM 4:00 PM
<b>Thursday</b>	State of NH Veterans Service, 1st & 3rd week Call for your appointment 603-624-9230 X 301 Strength, Balance & Stretch Movie Series 1st & 3rd, Arts & Crafts with Elaine 2nd Tai Ji Quan, Moving for Better Balance	By Appointment  10:00 AM 12:30 PM 4:00 PM
<b>Friday</b>	Computer Classes call for an appointment Call Penny 603-356-3231 Chair Exercise Class Friday Painters, bring your own supplies	By Appointment  10:30 AM 12:30 PM

# Gibson Center Upcoming Day Trips

For all bus trips, please sign up and pay in advance. Call **603-356-3231**. Federal health precautions are followed on the bus. For Door to Door Transportation trips you will be called with your individual pick up time the day before the trip. Many venues will only hold tickets for so long. Please indicate your interest, so we can reserve tickets.

**All trips this season have reduced rates due to the generosity of program sponsors.**

Monthly trip to the **Humane Society, to socialize Cats**, first Wednesday each month, after lunch.

**First Friday Concerts at the Majestic.** Donations accepted for the performance.

- **December 6th, 1 PM** Enjoy a jazzy take on seasonal music (and some jazz standards) from Majestic Cafe favorites Dan Moore and Rick Gordan. No promises, but there might be a sing-along....Drive your self this month.

We will visit the **Brownfield Market** after lunch on when we have a bus. They have amazing produce! Bring your own bags.



**Festival of Trees:** After lunch on Friday, December 6th. Bus, \$5, pay your own entrance at the door. (\$10 admission, but you can always purchase more tickets).

**Dana Cunningham, White Church Concert.** Dana is an amazing pianist, some say she plays like an angel! Home pickups for this Sunday, December 8th concert at the White Church in Eaton. Donation for the bus, and Dana has kindly invited people who ride the bus to pay what they can for the



\$30 concert. This is the perfect way to get into the Christmas Spirit!

**The Magic of Christmas, Cirque Style.** December 13th, join us for this very popular event. We will stop for lunch on your own at the Sebago Brewery. The show and transportation are only \$55.



**Gift of Lights:** view 3.5 Million lights at the NH Speedway. We will stop for supper on your own at the Tilt'N Diner. Transportation and the Light Event are \$25. Tuesday, December 17th.

**Stonehurst Holiday Party** January 7, 2025. We will close out the Christmas season at the Stonehurst with a 3 course meal. The meal, coffee or tea, tax and tip are only \$52, or for door to door service on the Gibson bus, \$57.

**Snow Sculptures:** January 27th, after lunch. Bus donation, bring money for hot cocoa.

**POP's Classical Mystery Tour:** Sunday, March 16th. 10AM-6PM. The Portland POP's play the music of the Beatles, early years though their single careers. Tickets and Transportation, \$70. Early lunch on your own at the Sebago Brewery.



**The Simon & Garfunkel Story:** Wednesday, April 23rd 2-11:30PM at Merrill Auditorium. This is a multi media performance, showcasing musicians, as well as news clips from the time that the songs were released. Tickets and Transportation, \$85. Tickets are only being held until December 13, so sign up today. Dinner on your own at the Sebago Brewery.

## Claiming Our Vitality!

Vitality is a gift of our creation. We can claim it. This discussion group offers the opportunity to share ideas together about how we might realize our vitality and what it looks like. We know we have full support of the eternal universe in claiming our inherent vitality. It's fun to move forward together getting the ideas that raise our consciousness and shift our lives gently, step-by-step, into easy, wholesome vitality. As essential parts of creation, we can enjoy the peaceful, purposeful and healthy life for which we are intended.

Please join us **Wednesdays at 10AM beginning December 4th** in the WiFi Cafe to share ideas in our blossoming vitality. For questions or comments, call or text Karl Kehde at **908-625-0638** or email [kahdekarl@gmail.com](mailto:kahdekarl@gmail.com).



## Gibson Globetrotters: Overnight Trips

Please sign up for all programs: **603-356-3231**. Collette has a fantastic insurance policy, one can cancel up to 24 hours before the trip

### Collette Tours

**Explore Northern Italy:** October 23-31, 2025. 9 days, 12 meals. Unpack once. Visit Treviso, Tiramisu-making demonstration, Verona, Murano Glass-Blowing demonstration, Venice, Asolo, Prosecco Winery Tour, The Dolomites, Bassano del Grappa, Venetian Villa Visit. [Link to the Flyer](#)



**Alaska America's Last Frontier:** July 17-25, 2025. 9 Days, 14 meals. Fairbanks, gold panning, Sled Dogs, including Susan Butcher's Kennel, Riverboat tour, Dome Car to Denali, Tundra Wilderness Tour, Talkeetna, Anchorage, Matanuska Valley, Local Culture, Prince Williams Sound Glacier Cruise. [Link to the Flyer](#)



### Diamond Bus Tours: 2025 Bus Trips:



**Spring in Boston**, for the 250th anniversary of the Shot Heard Round the World. Boston, Lexington, Concord, Salem. May 30-June 2, 2025. \$577 pp/do 3 nights, 6 meals. **NOW COLLECTING DEPOSIT \$75.** [Link to the flyer](#)



**Myrtle Beach, Spotlight on Shows!** 5 different shows, the Myrtle Beach Boardwalk, Living History Farm, National Harbor, Airborne and Special Operations Museum, October 18-26, 2025, \$1230, 8 nights, 14 meals. [Link to tour information](#)



# Ongoing Services From the Gibson Center

**Senior Resource Navigator – Renee Wheaton** helps with troubles like how to apply for government assistance, renew a driver's license, access care or arrange for home services, find durable medical equipment, or the like. Reach her directly at **603-205-0909** or by calling the Gibson Center



**Computer Tablet and Chromebook access** – We can offer free Tablets and Chromebooks thanks to generous grants from Spectrum, Charter Communications Digital Education Grant, Maine Council on Ageing – while supplies last.

**Computer Training – David Smolen:** Fridays 9:00 AM - 12:00 PM and our volunteer experts Mondays - all offer 1-1 training for beginners or more advanced users. Skills training can include setting up email, Zoom, searches, learning how to access medical practice portals for appointments, labs and questions, how to make and participate in Telehealth appointments, online job applications, how to prevent scams and fraud, and smartphones, cameras, photos and games. Call **603-356-3231** to sign up for tutoring.

**Personalized Medicare Counseling:** If you are turning 65, you need to sign up for a Medicare. To make the best choice for your health situation, meet with an unbiased, and unaffiliated counselor who explains the differences between Original Medicare and Advantage Plans, financial assistance programs, late enrollment penalties, and deferring enrollment. Please call **603-356-3231** to schedule your personal appointment. **Schedule your New to Medicare for January, as Ele is currently working on Med D Open Enrollment**

**Advanced Care Planning – Joan Lanoie.** Understand and get help with writing down your options for end-of-life care and making your wishes known. Joan Lanoie can help explain the nuances and implications while also providing helpful advice for family members. Appointment made by calling **603-356-3231**.



**Veterans' Administration Benefits Counseling** – Counselors come the 1st and 3rd Thursday of each month from 9:00 AM to 3:00 PM by appointment to provide consultation regarding Veteran's Benefits. Call **603-624-9230, ext. 301**, or email **Jay.Davis@va.gov** to request an appointment directly.

**Finding Reliable Health Information – Dr. Charles Felton** is a retired pulmonologist who can help you find reliable healthcare websites and research. He can help interpret medical information and misinformation. He will not be acting as a medical provider but be your advocate and guide. Fridays 1:00 PM -3:00 PM by appointment by **603-356-3231**



**Stay Warm, Safe and Dry - Home Modification:** Valley homeowners who need a reliable,



licensed contractor to help with small modification projects to improve the safety, warmth or tightness of their homes can call Renee Wheaton, who will coordinate with our contractor, Adam Balodis. Sample projects include replacing or repairing porch steps or railings, installing grab bars, improving lighting, changing out air filters, installing smoke or CO alarms, installing ramps, or other repairs that increase health and safety. This is not an emergency service but one that will be available by request and subject to scheduling. Renee can be reached by calling the Gibson Center

at **603-356-3231** or email **staywarm@gibsoncenter.org**

# Seasonings from Becky in Nutrition

~Happy December~

December is National Fruitcake and Egg Nog Month, a time to celebrate two festive holiday staples. Fruitcake, with its rich mix of dried fruits, nuts, and spices, is often a polarizing treat but remains a beloved tradition for many. Eggnog, a creamy, spiced beverage made with milk, eggs, and often a splash of alcohol, brings warmth and cheer to gatherings. Both are tied to centuries of holiday celebrations, and this month encourages indulging in these classic flavors while embracing the holiday spirit. Let's see if we can lighten it up just a bit to keep you all healthy over the holidays.



## Light Fruit Cake

- 185 g low fat spread or butter at room temperature
- 115 g caster sugar
- 4 eggs beaten
- 185 g self raising flour
- 60 g plain flour
- 260 g mixed dried fruit
- 60 g dried apricots chopped
- 100 g glace cherries halved
- 125 ml milk

### Instructions

1. Preheat oven to 160C/315F/Gas 3. Grease a loaf tin using a little butter or spread or add a loaf tin liner.
2. Beat spread and caster sugar together in a large bowl until pale and fluffy.
3. Gradually beat in the eggs until combined, then fold in the flour, fruit and milk.
4. Spoon the cake batter into a loaf pan and bake for 80-90 mins until a skewer inserted comes out clean.
5. Cool in the cake tin for 15 mins then remove from tin and cool completely on a wire rack.

## Egg Nog

- 2 cups milk (options: milk, unsweetened rice milk, almond milk or soy milk)
- 3 large egg whites
- ½ cup honey
- 1 tsp. pure vanilla extract
- ½ tsp. ground nutmeg
- ½ tsp. ground cinnamon + extra to sprinkle on top

### Instructions

Let's take a moment to talk about your options here first. If you don't want the eggs in your eggnog, simply omit them. But you will have to reduce the milk by about half to get it to thicken properly.

1. Place all ingredients in a blender and blend for about 2-3 minutes
2. Pour the eggnog into a pot and warm over medium-low heat for 15 minutes to cook the egg. You want this to get hot, but you do NOT want to boil it. Towards the end, it will want to simmer. Whisk constantly to avoid it.
3. Remove from heat and set the pot in the fridge when it's cooled enough to do so. Chill overnight.
4. If you made this with the exact listed ingredients (no substitutions), you will see that when it's cold, it becomes very thick. Blend with a whisk.
5. If you find that it's far too thick, simply add a bit more milk until you reach the consistency you enjoy.
6. Pour into cups and sprinkle with cinnamon.

**Bon Appetite! –Becky**

## Board Member Spotlight: Kelly Drew

Kelly was born and brought up in this beautiful town and was close friends with the Mori family.

The MWV holds a special place in her heart. Her grandfather opened up two Hill's IGA grocery stores in this area over 70 years ago. Her father started L. A. Drew, Inc. in the late 60's which is still run as a family business. She attended Kennett High School and graduated at what is now known as Southern NH University with a BA in Business Management. She began a career in commercial lending at a statewide bank eventually becoming Assistant Vice President of First NH Bank (now Citizens). A few years later, she saw a need to help small start-ups and offered assistance in drafting business plans. She then joined her family's construction company sliding into the office manager position.

Joining the Board of Directors at the Gibson Center was a natural move as Kelly was already heavily involved in the community with the Rotary Club of North Conway. Currently, she is the District Governor overseeing 42 clubs through northern NH, much of Vermont and parts of Canada. She is also a Trustee with the United Congregational Church in North Conway.



## 2024 Medicare Part D: Open Enrollment

Open Enrollment for Medicare Part D began on October 15th and closes on December 7th. Medicare Part D is a prescription drug plan for people 65 and older. We are very grateful to certified volunteer councilor, Ele Border for donating her expertise and considerable time to providing detailed counseling. Unfortunately, her appointment calendar is over-subscribed now so she is unable to take any more appointments. You can still compare plans and make selections yourself by going to the [Medicare.gov](https://www.Medicare.gov) website if you have a computer or internet capable device. If you need computer assistance, please consider making an appointment with our volunteer computer counselors.



### Our Business Supporters



Locally Owned / Caring Pharmacist  
3631 White Mt Highway, North Conway  
603-730-5432



**Nancy M. Cavalieri, CFE**

Landline (603) 323-7557  
Cellphone (603) 986-3836  
nancymcavalieri.cfe@gmail.com

#### Elder and Probate Accounting

Organize financial documents  
Pay bills, make deposits, reconcile accounts,  
Sort records for year-end tax preparation  
Verify medical insurance documents and claims  
Help with paperwork for agencies, associations,  
medical or benefit groups

#### Certified Fraud Examiner

Fraud Detection, prevention, investigation and  
Litigation support



**L. A. DREW, INC.**  
GENERAL CONTRACTOR

Is the premiere commercial & custom  
home builder in Mount Washington  
Valley. Excavation, pre engineered  
structures, road clearing & more!

We work hand in hand with you to bring  
your vision to life



#### BUILT BEST.... BY DESIGN

Design/Build consultations in house.  
Free estimates on your design plans.  
(603) 356-6351



# Look What I Found at the Gibson Thrift Shop!

Thrifty recycling ideas for the holidays!

## Recycle Idea #1 – Make Christmas Trees using old books.



You can make lovely table or mantle displays using old books. Since more people are opting to read on tablets or listen to audio books, the real deal books are filling up the land fill. You can use your own books or find some cheap books at the thrift store for this holiday craft project that is easy and fun to do. In fact, it was so much fun for my daughter

that she made them for all of her teachers one year.

We should have a few on display during December if you want to check out the folding process.



## Recycle Idea #2 – Make a themed gift basket for someone.

You can find books and mugs for \$1 and puzzles for just a couple of dollars. Theme your gift basket “snow days”. Add in a \$3 pair of mittens and buy some hot cocoa. We even have baskets available.



## Recycle Idea #3 – Beautiful gift tags.

One of my favorite crafts to do is to make beautiful gift tags using the cards I received last year or left over cards that have no envelope. Just cut out the image on the front of the card using nice rounded edges or try some pinking shears. Add a hole punch at the top and some cute ribbon. Of course glue and glitter can be added too.

Thank You for recycling!

Ingrid Kellas

Fundraising coordinator

## Our Business Supporters

The right  
bank makes  
a real  
difference

Click: [northwaybank.com](http://northwaybank.com)

Call: **800-442-6666**

**Northway**  
BANK

Member FDIC

**BEASLEY & FERBER**

*The Elder and Disability Law Firm*

Estate Planning and Elder Law Wills,  
Trusts and Probate Avoidance  
Estate Administration & Guardianships  
Saving Assets from Nursing Home Stays



**CALL FOR A SCHEDULE OF FUTURE  
ESTATE PLANNING SEMINARS AT THE  
GIBSON CENTER**

Please call for information about future  
presentations

**1-800-370-5010**

## Memory Tree

This holiday season, remember someone special. Keep his or her memory bright by purchasing a \$50 perpetual red bulb that will light for a lifetime, or a seasonal white bulb for \$10 to shine on the Gibson Center Memory Tree **December 1, 2024-January 15, 2025**.

Please call **603-356-3231** to make arrangements.



## What Every Girl Wished For...

.... A Nancy Anne Story Book Doll!

Join Jeannie Seig, as she tells the story of these captivating cuties!

**Tuesday, December 10th, after lunch.**

Jeannie is a long time seamstress, who dressed other people's dolls, often taking payment with their cast off dolls, which she dressed and was able to sell or keep starting her own collection. Jeannie will share her National Doll Show presentation about the Nancy Ann Story Book Dolls.



## Tech Training In January

Gibson Center is partnering with our friends and colleagues at the Jackson Public Library and Digitunity to offer technology training in January. The five week course will follow a curriculum created by AT&T and will include such topics as video conferencing, staying safe on the internet, smart phone basics, and anything else participants are interested in learning. We are looking for six people to participate in this five part training.

Classes will take place on January 8th, 22nd, and February 12th, 19th, and 26th. We will take the Gibson Center bus at 12:30 and make it to JPL for the 1PM start time. Classes are one hour each. **FMI contact David Smolen or Jill Reynolds.**



## Care Givers

There are three options for caregivers who would like some added support. REACH, a Zoom meeting, and 1:1 Peer Support. Call Jill if you are interested.

**REACH:** stands for Resources for Enhancing Alzheimer's Caregiver Health in the Community. Caregivers will meet with trained coaches and learn to solve common caregiver challenges. Meeting options are currently in-person, one-on-one coaching, phone, or ZOOM.

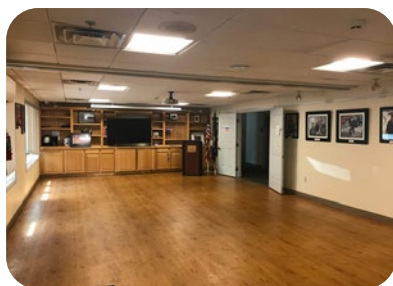
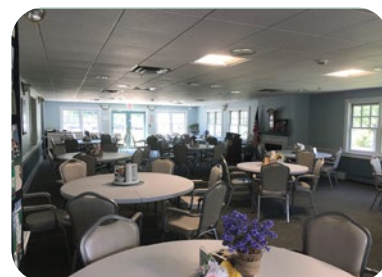
**Caregiver Peer Support:** There are caregivers who have probably experienced your challenges and can offer a non-judgmental ear. Currently caregivers prefer phone calls so they can keep their loved ones safe.

**Late Evening Zoom Meeting:** We realize that many caregivers do not have the luxury of attending a meeting during the day. We are looking to host a later in the evening meeting via zoom for those caregivers who cannot leave their homes for meetings. Please contact Jill for more information, [jill@gibsoncenter.org](mailto:jill@gibsoncenter.org).

## Reserve the Sprague Dining Room for your meetings – Online

The beautiful Sprague Dining room and the Glenna Mori Activity room can be reserved for members of the Valley to use for meetings and activities. Reservations for the Dining room can be easily made for available times by going to our website, <https://www.gibsoncenter.org/product/sprague-dining-room/>

**SPRAGUE DINING ROOM:** The 65-seat dining room (without kitchen) is available from 8:00-10:00 am weekday mornings and again from 1:00-4:00 in the afternoon and some evenings or weekends by special arrangement. Our calendar of available times and room policies are posted on the website under Book a Room. There is a nominal fee of \$35 for the Dining room that may be waived for non-profits. We hope you will come enjoy the central Valley location, parking, and congenial facilities for your organization meetings, presentations, family gatherings or club events.



**GLENNA MORI ROOM:** The Activity Room is a 70-person seating capacity program room with projector and 7 high-quality stereo surround-sound speakers or can be used by up to 20 people for exercise and dance. Our fee is \$25 and may be waived for non-profits. The Activity Room can be requested by completing an inquiry form with a response time of 3 business days as we check for availability of this much used space. Online go to <https://www.gibsoncenter.org/glenna-mori-activity-room/>

### TIM DI PIETRO



- Residential Electrician
- Electrical Repairs
- Electrical Upgrades
- Commercial Electrician

NO JOB TOO SMALL

**603-356-2248**

Our Business Supporters



2448 Main Street

North Conway, NH 03860

603.356.5819

[info@northcountryfairjewelers.com](mailto:info@northcountryfairjewelers.com)



## Photos from recent Trips & Events

**Trips:** Humane Society, Festival of Trees, Book Club Tree (Dickens's Christmas Carol), Thrift Shop Tree (New Year's Eve, Tie One On).

**Events:** Elaine's Arts & Craft Class; Halloween, Veteran's Day, Thanksgiving Lunches



# Kudos - Donations

The many people who have called us and offered help! This is such a wonderful community!

Thanksgiving Lunches sponsored by: Bergeron

Technical Services: Shawn, Linda, and Kate.

Farm Fresh Veggies: Sherman Farms; Davis Natural Produce

Exercise Space: Pope Library and North Conway Community Center

Movies: Conway Public Library & Elaine Klement

Altrusa: 2nd Tuesday volunteers

Conway Area Humane Society

The Gibson Center Trip Angels

Majestic Theater/Mountain Top Music 15% off

M&D Theater

Little Angel Service Dog, Eleanor!

Book Club: Pamela Memmolo, Conway Public Library

The Dining Room volunteers, for making us feel special

Vaughn Community Services Food Pantry & Jennifer

Shaws, Wanda Wirling

NH Food Bank

Catholic Charities of NH

Wal-Mart; Phil Spinney

Old Village Bakery

## Local Radio Stations:

Easy 95.3 WBNC,

93.5 WMWV,

104.5 WVMJ - Magic.



Altrusa





# Our Business Supporters Newsletter Listings

**Beasley & Ferber, P.A.** (1-800-370-5010) David Ferber, estate planning including avoiding probate, protecting assets from nursing homes, avoiding state taxes, and elder law.

**Chalmers Insurance** (356-6926) Steve Cote, full line of personal and business insurance, including Long term care, life and annuities.

**Coleman Alvin J. & Son** (447-5936) 9 NH Route 113, Conway. General Contractor

**Gamwell, Caputo & Co., PLLC** (447-3356 or fax 447-6563) Dave Caputo, certified public accountants providing tax, accounting, and financial statement services for businesses, individuals, trusts and estates.

**H.R. Hoyt Construction Inc.** (447-2612) Conway, NH. Poured Concrete

**LA. Drew Inc** (356-6351) has been a leading contractor in the Mount Washington Valley since 1969. Working with homeowners and architects, we can help you build your dream home from the ground up.

**Memorial Hospital** (356-5461) The community hospital of Mt. Washington Valley. Your partner in good health.

**North Country Fair Jewelers** (356-5819) Brian Smith, Main St, N Conway. Diamonds, gold and silver jewelry, coins, pearls, watches, clocks and antiques. Repairs, appraisals, buy, sell and trade.

**NorthEast Auto Body** (356-5808) David Smith, 530 Eastman Road, North Conway, N.H.

**Northeast Delta Dental** delivers quality dental insurance products and services to individuals and families, and groups of all sizes. We work hard to make dental care more affordable and available to the public.

**Notchland Inn** (374-6131) Harts Location, NH Romantic dining and lodging.

**Sapphire Wealth Management** (356-9371) 3277 White Mt. Hwy. Investments including Stocks, Bonds, Annuities, Retirement, College Planning

**Settlers Green Outlet Village** (356-7031) over 60 stores. Every Tuesday is Senior discount day at participating stores.

**Varsity Beverage Conway** (447-5445) Distributor of Pepsi Cola, Schweppes, Dole Juices, Lipton Tea, Gatorade, Aquafina Water, Mountain Dew, Mug Root Beer, Frappuccino, and Hawaiian Punch.

**White Mountain Oil and Propane** (356-6386) The Saunders Family, oil and propane, major appliances.

**Yankee Smokehouse Restaurant** (539-7427) Joseph Ferriera, Jct. Route 16 & 25 in West Ossipee. Real open pit barbecue.

## Donate to The Gibson Center

### Ways to Give

1. Make it VIBRANT: One time or monthly recurring donation
2. Make it ABUNDANT: Honor or memorial gift, abundance guild
3. Make it LAST: Legacy honor society member, planned giving, charitable bequests, IRA charitable rollover, give appreciated stock, name a charity as the beneficiary of your retirement account

### Donation Link

<https://www.gibsoncenter.org/donations-ways-to-give/>

Gibson Center is a 501(c) (3) and donations are tax deductible & our EIN is 02-0351152.

